

### 6.1.3

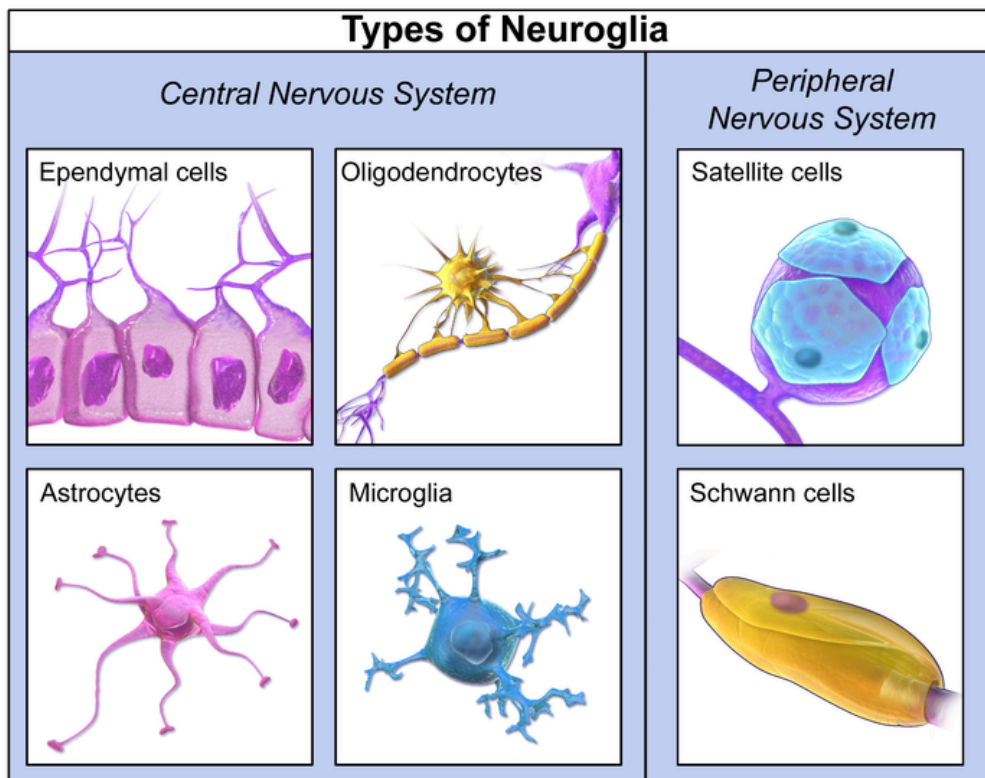
## Glial Cells of the PNS

### The Schwann Cell

The Schwann cell is the myelinating cell of the PNS. In contrast to the oligodendrocyte of the CNS, which uses multiple processes to myelinate multiple segments of axons, a Schwann cell provides myelin for a single segment of an axon. Still, the appearance and function of myelin in the PNS is exactly the same as the CNS.

### The Satellite Cell

Satellite glial cells help regulate the external chemical environment around neurons of the PNS. In this way, they are very similar to the astrocyte of the CNS but, in addition, are highly sensitive to injury and inflammation.



**Types of Neuroglia.** Author:Blausen.com staff (2014).

"Medical gallery of Blausen Medical 2014". WikiJournal of Medicine 1 (2). DOI:10.15347/wjm/2014.010. ISSN 2002-4436.

License: [CC BY 3.0 (<http://creativecommons.org/licenses/by/3.0>)], via Wikimedia Commons



This content is provided to you freely by BYU-I Books.

Access it online or download it at

[https://books.byui.edu/bio\\_264\\_anatomy\\_phy\\_l/613\\_glial\\_cells\\_of\\_t](https://books.byui.edu/bio_264_anatomy_phy_l/613_glial_cells_of_t).